

Jahresbericht 2020, Triakhra e.V.

Wir freuen uns sehr, dass durch die großzügige Unterstützung unserer Spender auch 2020 einige grundlegende Projekte unterstützt werden konnten. Hier die Übersicht der mitfinanzierten Projekte:

Hohm Sahaj Mandir (USA)

Hohm Sahaj Mandir veranstaltet einige Seminare, für die es durch die Pandemie deutlich geworden ist, dass es aus Hygienegründen sinnvoll ist, einen Geschirrspüler zu kaufen. Triakhra hat diesen Geschirrspüler komplett finanziert.

Die Einrichtung besitzt einige Gebäude, die für die Angestellten genutzt werden. Da Hohm Sahaj Mandir in Arizona sitzt, was ideale Voraussetzungen für Solar Panele bietet, wurden Solar Panele installiert. Triakhra hat sich an der Finanzierung beteiligt.





Hohm Sahaj Trust (Indien)

1. Building and repairing the side wall and gate

We started the building and construction at the Anapurna plot by making a large opening in the back wall to allow construction materials and vehicle movements. However due to the covid situation we had to temporarily cease further construction work this year. Since the back wall and side gate were fully open making it dangerous on the property. We have built a temporary bamboo gate to secure the property until such a time when we can resume construction again. The gate from last year had been invaded and broken by animals, we therefore had to repair and rebuild it. This side wall and gate are made with local natural materials such as bamboo, dried leaves and coconut rope.

Picture of side wall area during process of repairs and rebuilding



Picture of side gate after breaking it down



Picture of side gate completed with closure



2. Closing the foundation holes at the Anapurna Property

Due to the ongoing pandemic we were not able to continue with the construction we had wanted this year. Many things in India were forced into shut down, and most of the money we had saved for construction was being refilled at high rates into food and clothing for the local poor people, and general maintenance. It then became dangerous to leave the originally dug foundation holes open since animals were falling into it and the holes were gathering water and becoming unstable. Therefore this year we had to close the holes until later on this year when we can hopefully continue.



JCB digger closing the previous foundation holes



Land again once flat and renewed

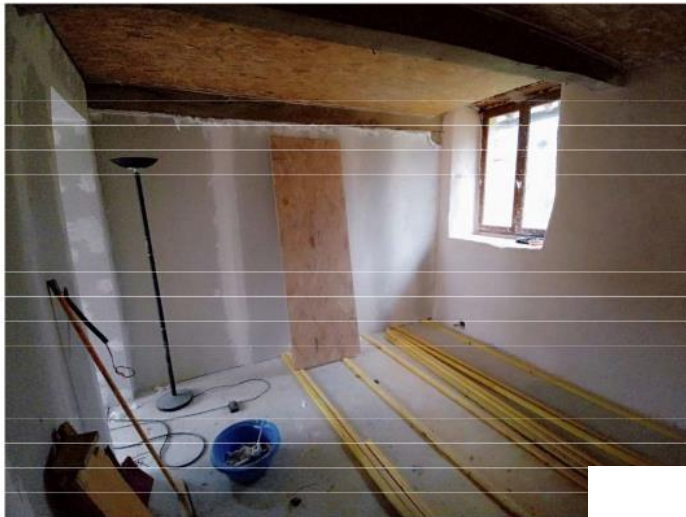


Ramji Association (Frankreich)



LIVING ROOM - ENTRANCE

- Tile flooring : 90%
- Sound-insulated walls : 90%
- Electricity : 20%
- **Remain : ceiling, paintings, wood stove, light fixtures, ventilation, stairs, carpentry doors**



ROOMS ON THE GROUND FLOOR:

- Concrete Slab :100%
- Sound-insulated walls : 80%
- Electricity : 20%
- **Remain : false ceiling and thermal/acoustic insulation, floor with thermal insulation, paintings, electric radiators, light fixtures, ventilation, doors and windows.**



ACCESS TO BEDROOM FLOOR

- Sound-insulated walls : 80%
- Electricity : 20%
- **Remain : floor with thermal/acoustic insulation, paintings, light fixtures, carpentry doors, stairs**



DRY TOILETS

- Concrete slab :100%
- Tile flooring : 90%
- Sound-insulated walls : 10%
- **Remain : false ceiling and thermal/acoustic insulation, paintings, light fixtures, ventilation, carpentry doors and sanitary equipment dry toilets**



BEDROOM FLOOR

Remain : floor to be insulated thermally and phonically, electricity and light, ventilation, joinery doors, access and stair junction. Partitions with stairwell.



BATHROOM

- Every has to be done : concrete slab, plumbing, drainage, showers and washbasins, electricity, wall and floor tiles, false ceiling and thermal/acoustic insulation, paintings, light fixtures, ventilation, woodwork doors, skylight/window drilling, wall to barn closure.

- Report 2020 Ende -